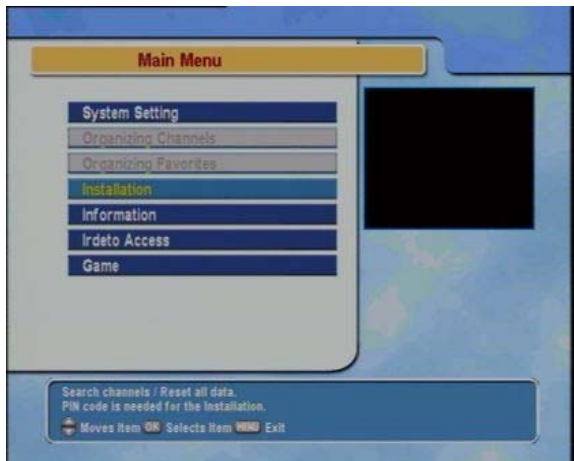
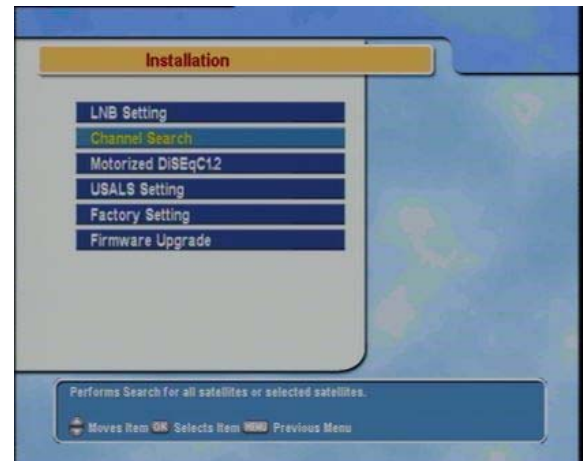


# RETUNING YOUR TOPFIELD RECEIVER



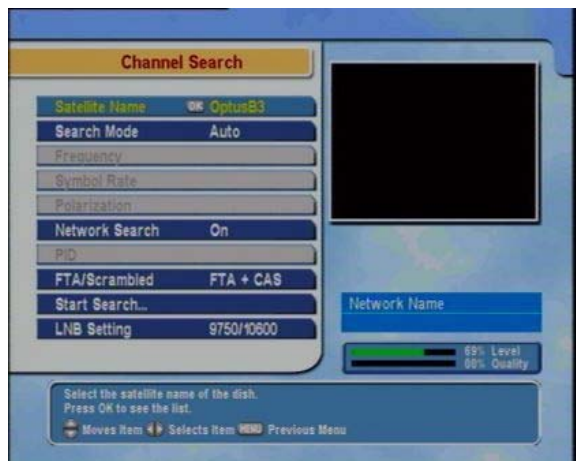
## STEP 1

On the Topfield Remote press "Menu" button. When the screen comes up. Using the lower arrow on Remote go to "Installation" and press "OK"



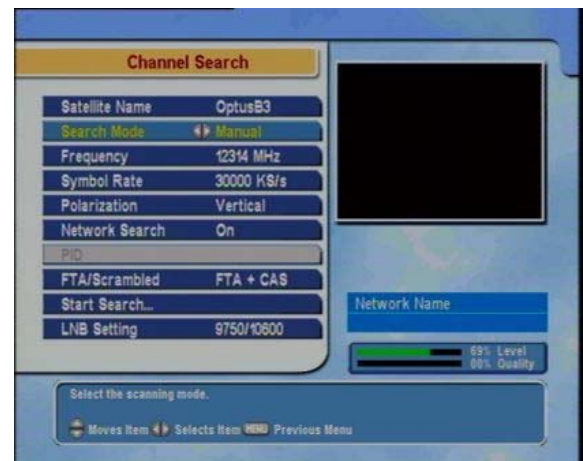
## STEP 2

The "Installation Menu" comes up. Using the down button on Remote Control go to "Channel Search" and press "OK"



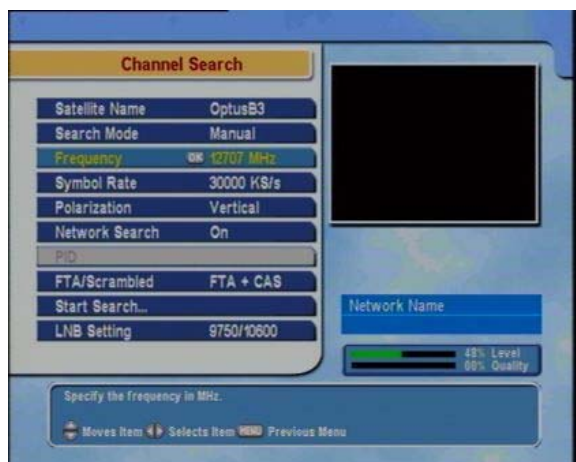
## STEP 3

The channel search Menu comes up. Using Remote Control go down to "Search Mode"



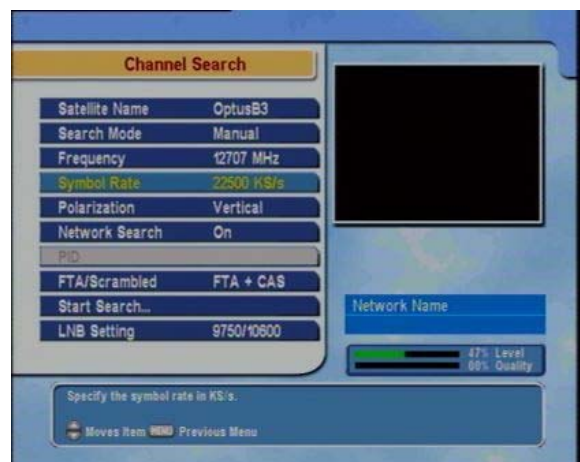
## STEP 4

In the "Search Mode" using right button on "Remote Control" and change it to "Manual"



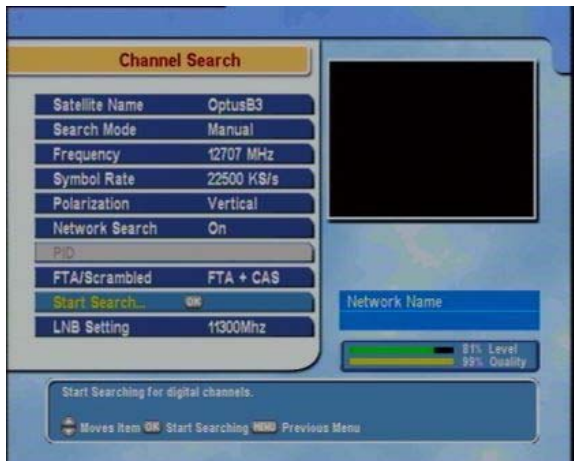
## STEP 5

Using the down key go to Frequency and change it to 12706 (using the number pad on Remote Control)

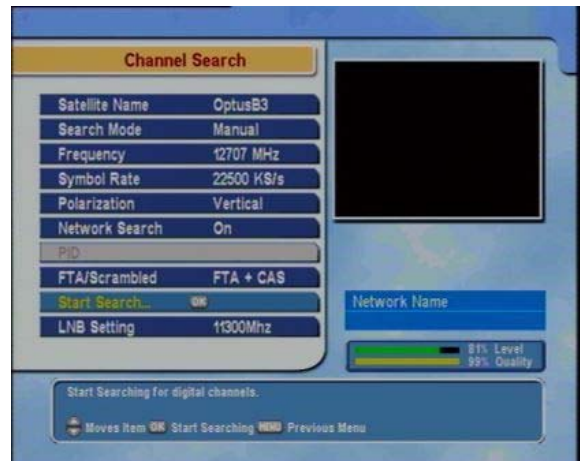


## STEP 6

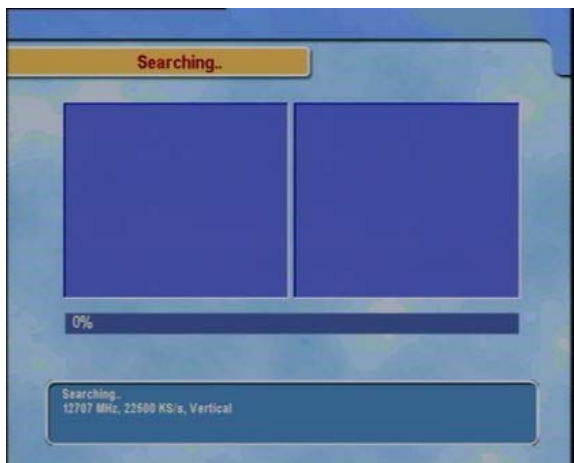
Go down to Symbol Rate and change the number to 22500 (using number pad on Remote Control)



**STEP 7**  
Make sure the Polarization is "Vertical" and Network Search is "On"



**STEP 8**  
Using don button go to "Start Search" and press "OK"



**STEP 9**  
The "Searching" screen comes up. At this stage box is scanning for channels



List of channels appear while the box scans on the new frequency



**STEP 11**  
Once scanning is completed exit the screen and scroll to your favourite channel

Scroll to your favourite channel (Using Remote control do channel up). Please note after the scanning the STU may store previous list of channels in their current channel position and the new channel list added to it. Please scroll through all channels